



# The Hope Herald

Hope Lutheran Church Newsletter

[www.hopeonbluerock.org](http://www.hopeonbluerock.org)

November 2022

## WELCOME HOME!

INSPIRING WORSHIP IN-PERSON &  
LIVESTREAMCHILDREN'S CHURCH DURING  
WORSHIP

Enjoy Inspiring Worship Sunday mornings at 10 a.m. in-person or on livestream. Visit the Worship tab at [hopeonbluerock.org](http://hopeonbluerock.org) for information on how to view livestream or recorded worship videos, to view weekly bulletins, and more. Our worship committee continues to monitor the Covid numbers in our community and to make informed decisions on worship practices based on this information, and we thank them for their hard work during these challenging times! If you have questions or concerns regarding worship, contact **Mike Schweinfest**, Chair of Worship & Music Committee.



**Pastor Christie**

## CHRISTMAS POINSETTIAS

Hope will be decorating our sanctuary with Poinsettias for the Christmas Eve service with red and white poinsettias. The cost of a multi-bloom plant is \$10.00. **The deadline to order the flowers is November 27th.** You will be able to pick up your flowers after the 5:00 pm Christmas Eve service or after the service on Sunday, December 25th. Write your check to Hope Lutheran Church. Please give form and check to **Ruth Oehler**.



**Ruth Oehler Altar Guild**

## NEW MEMBER SUNDAY COMING!

**NOVEMBER 20**

There will be an informative **Welcome Program for members, visitors and prospective new members on Sunday, November 13**, in the Fellowship Hall at 11:00, right after the Church service. Anyone interested should contact **Mary Bryant**.



([mabryant@cinci.rr.com](mailto:mabryant@cinci.rr.com) or 513.245.1151)

**Mary Bryant, Outreach Committee Member**

## FROM THE OUTREACH COMMITTEE

Thank you to all who have participated in the first two sessions of The Generosity Project! We have had a wonderful time of fun, sharing, and fellowship together as we learn more about God's abundant generosity in our lives.

As a reminder – **ALL ARE WELCOME!** The goals of the project are to connect people ages 2 to 102, equip all ages and households for the faith practice of generosity, and to grow in God's grace generation to generation. Even if you have been unable to join for previous sessions, we hope to see you at any or all of the remaining sessions.



Sessions take place after worship, with lunch provided, on the following Sundays: 12/4, 1/8, 2/5, 3/5.

Sign up to participate in the narthex or online at [hopeonbluerock.org/generosity](http://hopeonbluerock.org/generosity). We hope to see EVERYONE there!

**Pastor Christie**

## FROM CHURCH COUNCIL



Mark your calendars for Hope's annual fall congregational meeting, which will take place **November 20** after worship. This will be an important meeting to discuss Hope's budget for 2023 and beyond. We hope to see everyone there.

**Pastor Christie**



**Change clocks for  
November 6th**



## PR. CHRISTIE'S CORNER

*Then one of them, when he saw that he was healed, turned back, praising God with a loud voice. He prostrated himself at Jesus' feet and thanked him. - Luke 17:15-16*



A few weeks ago, on my way out of the church parking lot, the beautiful red and orange colors



of this tree caught my eye. I spent several minutes taking pictures of it, and thanking God for the beauty of this tree, of this moment. I was so excited by the tree, I edited Hope's website to make the picture of this tree the

first thing you see when you visit [hopeonbluerock.org](http://hopeonbluerock.org). I even made this photo the background screen on my phone.

I am glad I captured the image of the tree when I did. Many of its leaves have now fallen, turned brown, and blown away. And many more will follow suit in the coming weeks until we are left with only a view of empty branches as we drive into the parking lot.

We turn now to the month of November – and that makes me think of Thanksgiving, which makes me think of being thankful.

Recently in worship, our gospel lesson was Luke 17:11-19, a story about ten men whom Jesus cured of leprosy, and only one of the ten returned to thank Jesus. One thing that strikes me about the story is the ending. The man who returns to thank Jesus has already been healed from his leprosy, and yet Jesus tells him, "Get up and go on your way. Your faith has made you well" (v. 19). Why did Jesus need to make the man well when he's already been cured of his

illness? How did the man's thankfulness bring him this second blessing?

Jesus makes it clear that there is more to being healed, to being whole, to being well, than just our physical health. The man was able to be blessed with an extra level of wholeness, due to his gratitude and his faith.

So, how can we receive this type of blessing from Jesus? ***Through our gratitude and our faith***, according to Luke's gospel. We receive additional blessings every time we stop in the midst of our lives to give thanks for things that give us joy – whether it's pretty leaves, the smile of a child, the snuggle of an animal, a hug from a friend, or a million other things.

As we head into November, the pretty leaves will drop and blow away. But abundant blessings from God will always be with us. May we all spend moments this month noticing God's bountiful blessings and giving thanks, and may our faith move us ever closer to wholeness in Christ.

**In gratitude and blessings, Pastor Christie**

## COME TO BIBLE STUDY

**Thursdays at 1 pm**



Afternoon Bible Studies are in the Fellowship Hall on Thursdays at 1 pm. **Pastor Christie** leads the class in reading and discussing the gospel for the coming Sunday.

**No class on November 24th.** On December 1st the class will begin an Advent Devotional. Come share your thoughts on the Word.

## ANNUAL PUMPKIN ROLL

**Sunday, November 6 @ 2pm**

Weather permitting, kids of ALL AGES are invited to bring your leftover pumpkins to the home of **Ray & Nan Davis** for an afternoon of fun rolling pumpkins down the hill. If you need directions or have questions, see **Ray or Nan Davis. Pastor Christie**



## NURSERY IS OPEN



Don't forget that **Kayla Terbrueggen** is available during worship to care for Hope's youngest children if parents wish to take advantage of her services.

## NOTABLE NOVEMBER BIRTHDAYS

1	Colleen Leppert	22	Nova Gabbard
2	David Schneider	25	Heidi McKenna
	Delaney Vogelsong	26	Bonnie Long
3	Chris Bessey	27	Courtney Darnell
	Katie Glardon	28	Butch Royse
4	Cole Sullivan		Glenn Sheppard
	K C Kless		Brian Burkhart
7	Lois Vinup	30	Barbara Falk
12	David Sheppard		
	Doug Rehbaum		
19	Linda Leifling		
21	Jacob Byrne		



## WHOO (WOMEN HELPING OTHERS & OURSELVES)



A receiving basket for **“Candy for the Troops”** is on the Narthex counter. Please donate newly purchased or leftover candy from Halloween by November 6 for our troops to enjoy.

The annual **Thank Offering Service** is scheduled for **November 13th**. During worship, women may present their Thank Offering boxes and will supply the worship assistant responsibilities. New boxes are available on the Narthex counter.

The **WHOO Christmas Gathering** has been set for **December 7th at 6 pm**. Sign-up to bring a side dish or dessert to compliment the ham provided and join in the evening’s festivities.

## SON MINISTRIES REPORT



During September SON’s food pantry distributed food and personal care items to 130 families that included 133 children and 276 adults for a total of 409 persons. The number of older adults continues to rise!

**SON is closed November 23 and December 26 reopening on January 4.**

**For the Holiday Boxes: peanut butter (standard size), canned tuna or chicken, and liquid laundry detergent (approx. 32 ounces) are requested.**

**Thank you to all who donate to this worthy community effort!**

**BROWN PAPER GROCERY BAGS ARE ALWAYS NEEDED**

## NATE’S TOY BOX

Donations for Nate’s Toy Box can be brought to church by **Wednesday, December 7, 2022**. Items being



collected this year are: **New toys** (up to \$35 and unwrapped; no stuffed animals, please), **Family Board Games, Card Games and Puzzles, Books** (new or gently used for infants through teenagers), **\$15 Gift Cards** to local restaurants (McDonalds, Chick-Fil-A, Subway, etc. or **Cash donations** (for purchase of above items.))

For questions, contact Gary Schroeder at [garyschroeder@fuse.net](mailto:garyschroeder@fuse.net).

## DON’T FORGET TO CHECK OUR “BOOK NOOK”

**Women**, look over the books available for loan in the “Book Nook” located in the Fellowship Hall. There is still room on the shelves for any books you wish to donate. Take some time for yourself to read a book and relax!



## BOOK DONATIONS FOR SIDE BY SIDE MINISTRIES

The Magic Schoolbus at Hope is still collecting new and gently used books for children and middle schoolers which will be given to Side by Side Ministries. Their big brightly decorated garbage container is located at the entrance door awaiting your donations.



## Preparing for Advent

Join Us In a **Devotion of Hope**

Advent is a time of preparation for the light of Christ. It is a time that guides us to explore what Christmas means to us personally, and to discover the greatest gift we can give to our family, friends, and the world.



This year, the members of Hope will be asked to contribute our thoughts about the meaning of Advent. We will compile an “Devotions of Hope”, that will be available for everyone to enjoy during the season. This is how it will work.

Twenty-eight Bible verses, centered around the foretelling of Christmas will be provided. Choose a reading, and write a short reflection, a prayer, or perhaps words to a hymn, a poem, or a picture that reveals your own interpretation of the verse. It doesn’t have to be long or complex, just heart-felt. People of ALL ages are encouraged to participate! You will be able to sign up at church or on the church website at [hopeonbluerock.org](http://hopeonbluerock.org), Submit your devotion electronically to [kschweinfest@gmail.com](mailto:kschweinfest@gmail.com), or bring a hand-written copy to church. The due date is Sunday, November 13<sup>th</sup>. What a perfect gift to give to your family, friends, and the world.

**Karen Schweinfest, Worship and Music**

## THE GIVING TREE RETURNS

Once again **The WHOO** is sponsoring a **Giving Tree** for collecting children’s hats, gloves/mittens, underwear and scarves that will decorate the Narthex/lobby Christmas tree. These items will be distributed to area children in need during the winter at SON Ministries. **Please donate by December 4th to participate.**





## HOPE'S PRAYER SHAWL MINISTRY

Our Prayer Shawls (lovingly made by **Bonnie Leonhardt**) are found on the book shelf in the narthex (lobby). Please feel free to take one for yourself or someone you know who needs the comfort of prayer.



• There is now a notebook on the shelf and if you give a prayer shawl, please record your name and the date and who you are giving the shawl to. Then we can keep track of who has received one and who may still need one.

• There are also note cards there with this verse on the back:

**“This Prayer Shawl was made for you with the loving hands of a member of Hope Lutheran Church. As you wrap it around yourself feel the love of God encircling you and holding you in his loving arms.**

**May you be blessed by God, as we are blessed by being able to give this Prayer Shawl to you.”**

**Love and God's Blessing, Hope Lutheran Church”**

- There are also some blank note cards that you can write your own message in.
- And finally there are bags you can place the prayer shawls in.

Please remember the Prayer Shawls are there and give them to anyone who would benefit from them.

**Any questions, please contact Carmen Hasdorff, @ 513-315-7677**

**Carmen Hasdorff, Spiritual Life Committee Member**

## HOW TO JOIN ZOOM EVENTS

For the majority of our zoom meetings, the instructions for joining on zoom are the same. See below for instructions, and contact Pastor Christie with questions or difficulties. In the occasional case that the zoom link is different, instructions will be noted with the event publicity.



**To join virtually Join via zoom on computer or smart phone: <https://us02web.zoom.us/j/3178285949?pwd=YSs1QzNScVIMZzlkMkZpMTImVINLUT09>**

**Call in via telephone: 1-301-715-8592  
Meeting ID: 317 828 5949  
Passcode: 4695**

**DON'T FORGET ALL OCCASION CARDS ARE FOUND ON THE NARTHEX COUNTER FOR YOU TO SHARE!**

## FOR HOPE MEMBERS

**CPR AND AED CLASSES -**  
In partnership with Colerain Township



**Thursdays – November 3<sup>rd</sup> or November 10<sup>th</sup> – 4-5 PM  
Saturdays – November 12<sup>th</sup> or November 19<sup>th</sup> – 1-2 PM**

Register for one class only – classes include CPR on adults & AED Training

Ages 15 and older may attend and sessions are \*FREE!

(If you need a Certification and Card for CPR renewal the cost is \$50)

Classes led by **Pat Sauerwein**, CPR Coordinator and American Heart Association Instructor

**\*\*Location: Firehouse, Station 109 – 2850 West Kemper Road – 45251**

**Questions? Karen Schneider – Hope – 513 518-9047**

## WOMEN'S RETREAT ANNOUNCED

**Pastor Vicki Garber** has invited the women of Hope to a retreat at the Jesuit Spiritual Center, 5361 S. Milford Road, Milford, OH, 45150. It will be a time of Bible study, prayer, reflection, fellowship and peace.



The arrival time is 5:00 pm on Friday, December 9 with dinner at 6:00 pm. Breakfast and lunch will be served on Saturday, December 10, with the retreat ending at 3:30 pm.

The cost for 3 meals and the overnight is \$145 per person. Fees must be paid by November 9 with registration to be sent to Gloria Dei Lutheran Church, 2718 Dixie Hwy., Crestview Hills, KY, 41017. No refunds after November 9.

The full details are on the church bulletin board along with the registration form. For questions, contact Walda at 859-380-1188 or email at [walda.helvie@fioptics.com](mailto:walda.helvie@fioptics.com)

## SOME VETERANS DAY HUMOR



Seven-year-old Timmy was staring up at the large plaque that hung in the foyer of the church one Sunday morning. It was covered with names and on each side was a small American flag. Noticing this, the pastor walked up and said, “Good morning, Timmy.” Timmy’s eyes never left the plaque. He said, “Good morning pastor. What is this?” The pastor replied, “Well, son, it’s a memorial to all those young men and women who died in service.” After several seconds of silence, Timmy turned and asked, “Which service, the 8:30 or the 11:00?” **Thanks to Dave McBride**

***To give anything less than your best, is to sacrifice the gift.***

**from Steve Prefontaine via Chris Leppert**

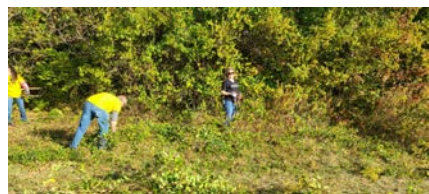
## NOVEMBER THANK YOU'S AND NEWS



**THANK YOU** to **Kathy Mushaben** for the beautiful Hope pillow that now adorns the pew in the Narthex. What an excellent choice!

### FROM THE OUTREACH TEAM: Colerain Township 6th Annual Community “Give Back” Day

**THANK YOU** to all who participated in Colerain Township Community Give Back Day, which took



place on Oct. 22. Our group assisted in cutting back a tree line to improve the grounds at the

Clippard YMCA. The weather was beautiful, and we had a wonderful time enjoying the company of one another and other volunteers from the community.

Photo: **Dave Moravec**, president of Colerain Chamber, at Clippard YMC with Hope volunteers **Bea**



**Zimmer, Debbie Schrader, Pastor Christie, Chrissy Hermann, Ron Thatcher, Val Schneider, Eva McMasters, and Xander Hermann. -Pastor Christie**



Thanks to **Debbie Schrader** for the pictures - note before picture above and after here.

**THANK YOU** to **Carmen and Chuck Hasdorff** for taking care of the altar and setting up the communion on Sunday, October 6th. **-Ruth Oehler**

**A BIG THANK YOU** once again to **Judy Royse** who keeps our entrance suitably decorated for the season and to **Bea Zimmer** “our water lady” who keeps the plants thriving!



### RECENT BAPTISM AND FIRST COMMUNION

During worship on October 16th the **Kayla and Joe Terbrueggen** family celebrated the Baptism of their daughter **Amelia Terbrueggen** with her aunt **Emily**



**Terbrueggen** as sponsor. In addition daughter **Avery Terbrueggen** was prepared to celebrate her First Communion. Several family members were present to join in the honoring these notable moments.

Hope is so happy to be a part of these special times. **May God's blessings surround them as they grow in faith!**

**THANK YOU** to **Nan Davis** for the wooden plaque so



uniquely designed to designate the “Book Nook” in our Fellowship Hall!



## HOPE DIRECTORY APP

**FOR YOUR COMPUTER OR PHONE** Directions are on the church counter or check for Instant Church Directory.



*\*Changes are continuously made. New pictures are requested. If you have changed your email address, you will need to re-enroll. It will not recognize the new email address for confidentiality purposes.*

Please contact Jerry Ivins for any changes.

## KROGER REWARDS PROGRAM

1. Visit [KrogerCommunityRewards.com](http://KrogerCommunityRewards.com)
2. Sign in to your online account, or create an account.
3. Find and select Hope Lutheran and click "Enroll."



Hope's 5 digit number is 80286. Please join today!

## BOX TOPS MADE EASY

Box Tops to school. All you need is your phone. Download the ALL-NEW Box Tops app, shop as you normally would, then simply scan your store receipts to find participating products. The app will automatically credit your school's Box Tops earnings online.

Karen Schneider

## DO YOU SHOP WITH AMAZONsmile?

It works just like Amazon (Amazon Prime) does...except you use AMAZONsmile at this site: [www.smile.amazon.com](http://www.smile.amazon.com) Use this website to sign up now!



It will donate 0.5% of the price of your eligible AmazonSmile purchases to Hope Lutheran Church. It is an easy way to help the funds to support our church.

## YELLOW BRICK ROAD CHILD CARE

Congratulations to Kayla Willey who has now achieved a 2 Star award rating for her child care facility!



Spots are available at 513-601-2596 or send an email to the address below:

[yellowbrickroadchildcare@gmail.com](mailto:yellowbrickroadchildcare@gmail.com)

## DON'T FORGET OUR NARTHEX BINS!

-Used toothbrushes, empty toothpaste tubes and floss containers for UC Dental

-Food and personal care donations for SON Ministries

-Pop tabs for Ronald McDonald House

-Religious materials for Love Packages

-Boxtops for Education for schools

-Lids and caps for Buddy benches

-Eye glasses for the Lyon's Club

-Pill Bottles for Matthew 25

-Clothing for Franciscan Sisters of the Poor



## HOPE'S CONTRIBUTION INFORMATION

To donate to Hope: Checks may be mailed to 4695 Blue Rock Road, Cincinnati, OH 45247 or brought to church.



Digital donations may be submitted at [www.hopeonbluerock.org](http://www.hopeonbluerock.org) Click on "Giving" and then click on "Online Giving" and choose how you wish to donate - either ChurchTrac or PayPal.

For questions email Ron Long at [finance@hopeonbluerock.org](mailto:finance@hopeonbluerock.org)

## PRAYER CHAIN INSTRUCTIONS



To submit a prayer chain request:

Complete this online form <https://www.hopeonbluerock.org/prayer-requests/>, or send an email to [prayer@hopeonbluerock.org](mailto:prayer@hopeonbluerock.org), or call Pastor Christie 317-828-5949 (cell) 513-923-3370 (church office)

Interested in receiving prayer chain emails? Email [prayer@hopeonbluerock.org](mailto:prayer@hopeonbluerock.org) with your contact information and we will get you added to the list.

## IN EVERYTHING GIVE THANKS

Poet: Unknown

For all that God in mercy sends -  
For health and children, home and friends;  
For comfort in the time of need,  
For every kindly word and deed,  
For happy talks and holy thoughts;  
For guidance in our daily walk -  
In everything give thanks!



For beauty in this world of ours,  
For verdant grass and lovely flowers,  
For song of birds, for horn of bees,  
For the refreshing summer breeze,  
For hill and plain, for streams and wood,  
For the great ocean's mighty flood -  
In everything give thanks!

For the sweet sleep which comes with night,  
For the returning morning's light,  
For the bright sun that shines on high,  
For the stars glittering in the sky -  
For these and everything we see,  
O Lord our hearts we lift to thee;  
In everything give thanks!



## HOPE'S BOTTOM LINE

September 2022



### General Fund

Total	MONTH	YTD
Beginning Balance	\$ 21,402.48	\$ 43,347.84
Revenues	\$ 14,050.03	\$ 128,673.86
Expenses	\$ 18,056.37	\$ 152,509.98
Transfers In	\$ .00	\$ 52.00
Transfers Out	\$ .00	\$ 2,167.58
Ending Balance	\$ 17,396.14	\$ 17,396.14

### Memorial Fund

Beginning Balance	\$ 9,957.53	\$ 7,789.41
Deposit	\$ .00	\$ 2,167.58
Interest	\$ .08	\$ .54
Total	\$ 9,957.61	\$ 9,957.61

### Wilma Hoffman Fund

Beginning Balance	\$ 17,690.89	\$ 19,365.40
Deposit	\$ 0.00	\$ 0.00
Interest Income	\$ 0.00	\$ 12.49
Disbursements	\$ 0.00	\$ 1,687.00
Ending Balance	\$ 17,690.89	\$ 17,690.89

### Mission Building Fund

Beginning Balance	\$ 14,383.74	\$ 14,373.95
Revenue	\$ 0.00	\$ 0.00
Interest	\$ 0.00	\$ 9.79
Disbursements	\$ 0.00	\$ 0.00
Ending Balance	\$ 14,383.74	\$ 14,383.74

### Capital One CD

Beginning Balance	\$ 52,694.40	\$ 52,642.22
Deposit	\$ 0.00	\$ 0.00
Interest Income	\$ 84.44	\$ 229.85
Disbursements	\$ 0.00	\$ 0.00
Ending Balance	\$ 52,863.14	\$ 52,863.14

Chris Arany, Treasurer

## COUNCIL HIGHLIGHTS

October 20, 2022 by Zoom



### ◆Ron Long, Financial Secretary:

We are about \$21,000 behind in our giving for the budget.

◆Chris Arany, Treasurer: He is working on the 2023 Hope Budget.

◆Lana Albright, Spiritual Life: The shut-in list has been revised. On recommendation of the committee, the council voted to remove 13 persons from membership due to several years of inactivity.

◆Erica Leppert, Christian Education: On October 30th the Generosity Committee will be presenting the children with piggy banks to get them involved in giving. A Children's Christmas Program is being planned for December 18th.

◆Outreach: Pastor reminded the council that Hope

is involved in the Colerain Township Community Give Back Day on October 22. A new member/visitor informational luncheon is scheduled for November 13 with a New Member Sunday on November 28.

◆Bonnie Long, Generosity: Refresher courses for CPR & AED's will be available soon. The next Generosity Project meeting will be on October 30.

◆Chuck Hasdorff, Property/Maintenance: We failed the yearly fire alarm inspection because of a faulty pull station. Replacing it did not fix the problem, so the new replacement fire panel will cost \$1400 from the Property/Maintenance budget.

◆Jerry Ivins, Digital Ministry: Jerry asked that if you see someone playing with the audio board, please ask them to stop. Recently all of the presets were wiped out. Work will begin soon on the new sound system as the parts arrive.

◆Pastor Christie: She will be on vacation November 2 thru the 8th.

◆The council job description updates are due to Jerry by the November council meeting.

◆The motion to approve post Covid changes for the Fellowship Hall rental was approved by council.

◆Jen Byrne, President: Mike, K.C., Carmen and she will not be returning to council. Mike and Carmen will serve on the Nominating Committee for the open 2023 Council positions.

◆The next meeting will be on November 10th, 2022.

*From the minutes of Debbie Schrader, Council Secretary*

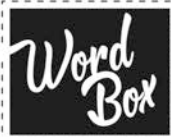
FOR THE DECEMBER ISSUE OF THE HOPE HERALD, ARTICLES ARE REQUESTED BY **SUNDAY, NOVEMBER 20th**. ARTICLES MAY BE EMAILED TO [joyceivins@icloud.com](mailto:joyceivins@icloud.com) or anytime before that date.



# Puzzle!

Although the Bible doesn't mention turkey feasts, the gospels do describe a miracle dinner that made thousands of hungry people thankful (see Matthew 14:13-21). Fill in the words to complete a poem about that meal.

**Hint:** Each pair of line endings should rhyme.



ate	faces	quest	then
began	late	ran	ton
bunch	lunch	rest	true
done	men	spaces	you

Jesus was tired and went to find \_\_\_\_\_.  
 So away from the crowd he started his \_\_\_\_\_.  
 It came to an end before it \_\_\_\_\_.  
 The crowd followed Jesus; they walked and they \_\_\_\_\_.  
 His boat pulled ashore, and he looked at their \_\_\_\_\_.  
 Five thousand men, plus families, filled all open \_\_\_\_\_.  
 And so Jesus spoke, and he taught until \_\_\_\_\_.  
 The disciples told him it was time they all \_\_\_\_\_.  
 Jesus said, "Yes, that is certainly \_\_\_\_\_.  
 And feeding this crowd is now up to \_\_\_\_\_.  
 Feeding five thousand! It could not be \_\_\_\_\_.  
 What would they do? They'd need a whole \_\_\_\_\_.  
 But then a young boy came and offered his \_\_\_\_\_.  
 Five loaves and two fish to feed this big \_\_\_\_\_.  
 Jesus gave thanks and blessed it and \_\_\_\_\_.  
 it fed all the women, the children and \_\_\_\_\_.

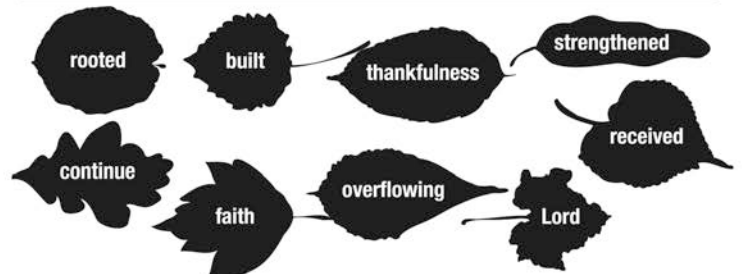
Answer: rest, quest, began, ran, faces, spaces, late, ate, true, you, done, ton, lunch, bunch, then, men



## Piles of praise

Every autumn, the ground is overflowing with leaves.  
 What does Paul encourage us to overflow with?

**Directions:** Use the key to match the leaves and complete the Bible passage.



So then, just as you \_\_\_\_\_ Christ Jesus as \_\_\_\_\_,

\_\_\_\_\_ to live your lives in him, \_\_\_\_\_ and

\_\_\_\_\_ up in him, \_\_\_\_\_ in the \_\_\_\_\_ as you

were taught, and \_\_\_\_\_ with \_\_\_\_\_.

COLOSSIANS 2:6-7, NIV

Answer: received, Lord, continue, rooted, built, strengthened, faith, overflowing, thankfulness





# November 2022

October 2022							November 2022							December 2022						
S	M	T	W	T	F	S	S	M	T	W	T	F	S	S	M	T	W	T	F	S
						1		1	2	3	4	5						1	2	3
2	3	4	5	6	7	8	6	7	8	9	10	11	12	4	5	6	7	8	9	10
9	10	11	12	13	14	15	13	14	15	16	17	18	19	11	12	13	14	15	16	17
16	17	18	19	20	21	22	20	21	22	23	24	25	26	18	19	20	21	22	23	24
23	24	25	26	27	28	29	27	28	29	30				25	26	27	28	29	30	31
30	31																			

Hope Calendar

Sunday	Monday	Tuesday	Wednesday	Thursday	Friday	Saturday
30 <b>Reformation Sunday</b> 10:00 AM Worship: In-Person & Livestream 11:00 AM Generosity Project	31 10:00 AM SON @ GUMC 5:00 PM Pastor's Office hours	1 <b>Pastor on Vacation</b>	2 10:00 AM SON @ GUMC 4:00 PM Worship Meeting 4:30 PM SON @ GUMC	3 1:00 PM NO Bible Study 4:00 PM CPR & AED Class @ Firehouse Station 109	4 <b>Pastor's Day Off</b>	5 <b>Don't forget to change your clocks!</b>
6 <b>Pastor on Vacation</b> 10:00 AM Worship: In-Person & Livestream	7 10:00 AM SON @ GUMC 6:00 PM Praise band	8	9 10:00 AM SON @ GUMC 4:30 PM SON @ GUMC	10 10:00 AM Pastor's Office Hours 1:00 PM Bible Study (virtual & in-person) 4:00 PM CPR & AED Class @ Firehouse Station 109 7:00 PM Council Meeting Zoom	11 <b>Pastor's Day Off</b>	12 1:00 PM CPR & AED Class @ Firehouse Station 109
13 <b>Thank Offering Sunday</b> <b>Prayer Shawl Blessing Sunday</b> 10:00 AM Worship: In-Person & Livestream 11:00 AM Learn More About Hope Luncheon	14 10:00 AM SON @ GUMC 5:00 PM Pastor's Office hours 6:00 PM Praise band	15 10:00 AM Pastor's Office Hours	16 10:00 AM SON @ GUMC 10:00 AM Pastor's Office Hours 4:30 PM SON @ GUMC	17 1:00 PM Bible Study (virtual & in-person)	18 <b>Pastor's Day Off</b>	19 1:00 PM CPR & AED Class @ Firehouse Station 109
20 <b>New Member Sunday</b> 10:00 AM Worship: In-Person & Livestream 11:00 AM Congregational Meeting	21 8:00 AM Rental: Lifeline 10:00 AM SON @ GUMC 5:00 PM Pastor's Office hours 6:00 PM Praise band	22 10:00 AM Pastor's Office Hours	23 <b>SON Ministries closed</b> 10:00 AM Pastor's Office Hours	24 <b>Happy Thanksgiving!!</b>	25 <b>Pastor's Day Off</b>	26 3:00 PM Advent Rehearsal
27 10:00 AM Worship: In-Person & Livestream 11:00 AM Advent Fellowship Event	28 10:00 AM SON @ GUMC 5:00 PM Pastor's Office hours 6:00 PM Praise band	29 10:00 AM Pastor's Office Hours	30 10:00 AM SON @ GUMC 10:00 AM Pastor's Office Hours 4:30 PM SON @ GUMC 6:30 PM Generosity Team Meeting	1 10:00 AM Pastor's Office Hours 1:00 PM Bible Study (virtual & in-person)	2 <b>Pastor's Day Off</b>	3

---

## The Hope Herald

Hope Lutheran Church  
Pastor Christie Beckmann  
4695 Blue Rock Road  
Cincinnati, Ohio 45247-3571  
513-923-3370  
[office@hopeonbluerock.org](mailto:office@hopeonbluerock.org)  
[www.hopeonbluerock.org](http://www.hopeonbluerock.org)



### OUR MISSION

**We are anchored in faith and saved by God's grace. Led by the Holy Spirit, it is our purpose to invite all to know hope, love, and peace through Jesus Christ.**



Pastor:	Christie Beckmann
Choir Director:	Karen Schweinfest
Organist:	Dale Renner
Altar Care:	Ruth Oehler
Prayer Chain:	Carmen Hasdorff
Web Site:	Pastor Christie Jerry Ivins
Facebook:	Mary Bryant
Kitchen Manager	Karen Schneider

### HOPE HERALD STAFF:

Worship Assistants:	Nan Davis Jerry Ivins Joy Ivins Ruth Oehler
Editor:	Joy Ivins
Clip Art:	Jerry Ivins

