



# The Hope Herald

Hope Lutheran Church Newsletter

[www.hopeonbluerock.org](http://www.hopeonbluerock.org)

May 2023

## WELCOME HOME!

INSPIRING WORSHIP IN-PERSON & LIVESTREAMCHILDREN'S CHURCH DURING WORSHIP



You are invited to Hope every Sunday at 10 am to join us in a combined worship with Contemporary and Traditional songs and liturgy.

## BIBLE STUDY

May @ 1 pm

Bible Study continues Thursdays in May at 1p.m., and is available on zoom as well as in-person. Contact Pastor Christie if you have any questions or are interested in joining via zoom. This is a wonderful time of fun, fellowship, and studying God's word. All are welcome!

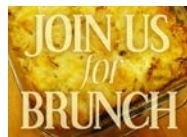


Pastor Christie

## PRAYER CHAIN BRUNCH

May 6

The Spiritual Life Committee is hosting a Brunch on Saturday, May 6th in the Fellowship Hall at 10 am. Prayer Chain members and anyone interested in learning about the Prayer Chain are invited to come and perhaps join with them praying to God for people dealing with a crisis or thanking Him for good news. Please sign up in the Narthex/lobby if you wish to attend.



## YOU CAN STILL BE INCLUDED

Thursday, May 18 @ 2 pm

Could you spare an hour to join a group visiting the Liberty Nursing Home on Livingston Road for a short worship service on Thursday afternoons once a month? **It begins on Thursday, May 18.** Add your friendliness to lift the spirits to those confined by their medical problems.

If you are willing, please contact either **Becky Lister** or **Linda McBride**, who co-chair Hope's Outreach Committee.  
**Linda McBride**

## WELCOME KENT HOLOCHER FOR DONUTS & FELLOWSHIP

Sunday, June 4, after worship

Please help us welcome **Kent Holocher** from Thrivent Financial. Kent is the son of the late **Craig Holocher**, and Kent has many fond memories of growing up here at Hope. Kent has transitioned his father's business since Craig's passing in October, and Kent is eager to reconnect with everyone here at Hope.



**Kent and his assistant Julie Ruter** are looking forward to providing donuts and beverages for us after worship on June 4. Please join us for this time of fellowship and reconnection. **Pastor Christie**

## SAVE THE DATE

July 16

Hope has scheduled an outdoor service on July 16ht. A potluck lunch will follow the service, Be sure to mark your calendar so you can attend and join in the fun and fellowship! More details will be coming as the date approaches.



## GRADUATE NEWS REQUESTED

Moms! Dads! Grandparents! The Herald editor is requesting news of graduates this spring. Please send the information of where they are graduating, any activities, and their future plans. A picture is most helpful also. Send to [joyceivins@icloud.com](mailto:joyceivins@icloud.com) or text to 513-702-1962. This in an invitation to show your pride!



## PR. CHRISTIE'S CORNER

### The Mugs of Our Lives

*"You honor me as your guest, and you fill my cup until it overflows. Your kindness and love will always be with me each day of my life, and I will live forever in your house, Lord." – Psalm 23:5-6 (CEV)*



In your prayer time this week, I invite you to try something with me: Find an empty mug or cup, preferably an old one, and just look into it for a while. Think about this empty cup as a metaphor for you and your relationship with God. What do you notice? Is the cup of your life chipped, cracked, or stained? Is it empty or full? If it's full, what's filling it? Is it so full of other things that it would be impossible for God to fill it? Or is it so cracked that anything God fills it with would leak out?

I attended a retreat this week and we did a similar exercise.\* I'll share with you what I thought about and what God said to me about my cup.

Each morning, I fill a mug with coffee and lots of creamer. My mugs are typically some kind of unique pottery, many of them given to me by my aunt, some purchased, but all of them look like they were handmade and hand-painted by a potter. I think I choose these because they are beautiful in a humble way, they are all unique, and none of them are perfect – kind of like us. I usually enjoy one mug of coffee while I sit on the couch, but then the second mug is for while I'm getting ready. Inevitably, I drink about half of that second cup, but then I get busy and I'm ready for work and haven't finished my coffee. So, there's some cold, muddy sludge left in the bottom of the cup and I dump it down the drain before I go.

What I thought during the retreat exercise was this: What is the cold, murky sludge that is filling the cup of my life? What are the things that get in the way of letting God fill my cup? These murky cup-fillers will be different for everyone, but I discovered that the sludge in my mug typically comes from one of two categories: anxiety and shame. I spend an awful lot of time worrying if what I'm about to do is ok, if what I've done is ok, and stewing over all the things I've done that weren't ok. I spend so much time in these thoughts that I forget to trust God. I focus so much on how other people might see me that I

forget about how God sees me: as a called and beloved child. My cup gets so full of these worries that there is little room for God to fill it with good things.

How do you find your spiritual cup lately? Is it empty? Cracked? Full of murkiness? What can you ask God to do for you so that your cup can be filled to overflowing with God's kindness and love?

May God patch all our leaky, stained cups, and fill them to overflowing this day and always.

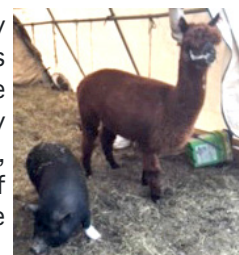
**Pastor Christie**

*\*Cup exercise courtesy of Rev. Kristin Santiago and the book The Cup of Our Life by Joyce Rupp.*

## WHOO VISITS TIKKUN FARM

Recently a group of women (plus 2 men) visited Tikkun Farm in Mt. Healthy to learn about all of their projects. A delightful staff member, **Megan**, related many ways the farm contributes to the community. Some activities include free nourishing food available 3 days a week (some grown here in raised bins), various classes including yoga, and job training for 18-21 year olds in urban farming and culinary art, for example. School children are frequent visitors.

The farm is home to some very interesting animals, too. On the left is **Jabberwocky**, the friendly male turkey and the potbellied pig, **Pauli** with **Mac**, one of their llamas on the right.



There are also many chickens, ducks, and geese to entertain the many visitors to the farm. Here is The Well House for food distribution and



greenhouse for growing plants and produce. **Thank you to Gretchen Dille**, who volunteers there, for arranging for them to visit.

## MAY THANK YOU'S AND NEWS

Thank you to **Becky Lister, Nan Davis, Jen Byrne and Lois Hollingworth** for carrying out the candles at the beginning of stripping the altar at the Maundy Thursday Service.

Thank you to **Judy and Butch Royse** assisting me with stripping the altar at the Maundy Thursday Service.

Thank you to **Ron Thatcher** for designing the fabulous Easter Sunday bulletin.

Thank you to **everyone** who ordered Easter flowers to decorate the sanctuary.

Thank you to **everyone** who carried an Easter flower to decorate the altar area.

**Ruth Oehler, Altar Chair**

**Editor's Note:** And many thanks to **Ruth** for ordering and arranging the Easter Flowers as well as our many paraments during this Lenten and Easter season!

Thank you to **everyone** who helped make our worship services so meaningful for Lent, Holy Week, and Easter, and to all who contributed to a wonderful Easter breakfast and Easter egg hunt. Every one of you contributes in a special way, and our church is so blessed by all of you. –

**Pastor Christie**

A huge word of **THANKS** goes to **Brian, Brad, and Aaron Byrne, Chris Leppert, Kyle Fanelli, and Greg Nuesse** for expertly cooking and serving a wonderful Easter breakfast. Everyone enjoyed the pancakes, eggs, sausage, and fruit. Thank you also to the **Fellowship Committee** for setting up for the breakfast. The table centerpieces were hand made mosaic crosses provided by Miss Erica's class. Thank you kids and **Erica Leppert!** They were beautiful!

**Karen Schweinfest, Fellowship Chair**

Many thanks from the **Heybruchs** for the meals, cards and prayers that they have received during Terry's latest stay in the hospital and nursing home. They are just so appreciative of everyone's kindness to them.

Thank you to **George Albright** for repairing the church's vacuum sweeper. He is still handy!

Heartfelt thanks to all of the vocal and instrumental musicians and worship assistants who helped create such meaningful services during the Lenten and Easter season services.

Thank you to **Judy and Butch Royse and Jerry and Joy Ivins** for providing the doves to end our Palm Sunday Worship Service! Hartmut Parnitzke enjoys spending Easter at Hope, and his doves are always a big hit!

## PALM SUNDAY AT HOPE

Our dear children (under the leadership of Erica Leppert) reenacted Jesus entering Jerusalem on Palm Sunday.



Pastor Christie wonderfully portrayed an emotional Mary, mother of Jesus.



Pastor's friend Jeffrey Barnes's portrayal of Simon of Cyrene's journey with Jesus carrying the cross to Calvary was also outstanding.



## JUST AS LITTLE HUMOR

WHY IS A COMPUTER SO SMART?

It listens to its mother board!



## MAGNIFICENT MAY BIRTHDAYS

1	Ken Klayer	20	Zach Arany
	Leah Wendel Siedling	21	Austin Kelbey
	Matthew Monroe	23	Ryan Gries
4	Sadie Tolle		Bill Pott
5	Kathy Troescher	29	Amy Byrne
6	Mike Long	30	Charlotte Springmyer
9	Levi Albright		
10	Kensey Krieg		
13	Chris Leppert		
	Alyson Schweinfest		
16	Avery Terbruggen		
17	Terry Heybruch		



MAY BIRTHDAYS

## ESTHER MARIE HATTON CENTER FOR WOMEN

On April 24th the Outreach Committee and WHOO combined to provide a luncheon meal of chicken casserole, muffins, fruit, chocolates, drinks, cupcakes and cookies for 29 women staying at this center where



homeless women may stay until they find a job and place to live. The shelter women were most appreciative and enjoyed the meal served with many returning for a second helping. The center was also given flip flops, little personal gift bags, and other various items. It was an interesting and well spent afternoon with **Dave McBride's** help.!

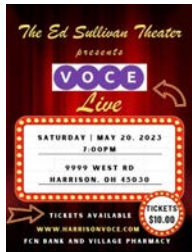
## WOMEN HELPING OTHERS AND THEMSELVES

The May meeting of this group is scheduled for May 25th at 6 pm in the Fellowship Hall. Just bring your own light meal and share in the fellowship!



## VOCE SPRING CONCERT

Saturday May 20, 7 p.m.  
Harrison High School Auditorium



Come support Harrison Voce, directed by **Karen Schweinfest**, with some of Hope's praise band members as performers. The spring concert is entitled **The Ed Sullivan Theater presents Voce Live**, and features many songs that were performed on The Ed Sullivan show. Tickets are \$10, and can be purchased through a Voce member, online at [Harrisonvoce.com](http://Harrisonvoce.com), or at the door.

**Pastor Christie**

## EASTER AT HOPE



Our lovely sanctuary on Easter Sunday.



Hope's cover by Ron Thatcher.

One of the crosses made by our children for the tables.



**Parker Beagle** releasing the lead dove in our Meditation Garden at the end of the service.



These wonderful cooks prepared a delicious meal to share.



## SON MINISTRIES REPORT

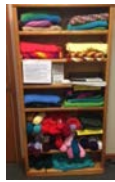
During March, SON distributed food and personal care items to 165 families that included 159 children and 348 adults for a total of 507 persons.



**For May SON is requesting 15 oz cans of beef stew and ravioli.**

**Thanks to all who donate to this much needed community effort!**

### **BROWN PAPER GROCERY BAGS ARE WELCOME**



### **DON'T FORGET TO CHECK OUR "BOOK NOOK"**

**Women**, look over the books available for loan in the "Book Nook" located in the Fellowship Hall. More books have recently joined the shelves. Be sure to check them out for a little escape time!

## **BOOK DONATIONS FOR SIDE BY SIDE MINISTRIES**

Don't forget the Magic Schoolbus at Hope that collects new and gently used books for children and middle schoolers which will be given to Side by Side Ministries. You can't miss their big brightly decorated garbage container located at the entrance door awaiting your donations.



### **DOES A FRIEND NEED A LIFT?**



All occasion cards are available for many different holidays and situations to show the friend or family member you care. Check out the assortment on the counter in the Narthex/lobby. And the beautiful prayer shawls, so lovingly made, are ready to put a warm smile on someone's face.

### **HOPE DONATION ENVELOPES**

If you would like new envelopes, you may pick up a box on the right end of the counter stop in the Narthex. Please sign the sheet with your name and number of the box to help our **Financial Secretary, Ron Long**, keep good records.



### **EVERYTHING MOM"**

How did you find the energy, Mom  
To do all the things you did,  
To be teacher, nurse and counselor  
To me, when I was a kid.  
How did you do it all, Mom  
Be a chauffeur, cook and friend?  
Yet find time to be a playmate,  
I just can't comprehend.  
I see now it was love, Mom  
That made you come whenever I'd call,  
Your inexhaustible love, Mom



### **HOW TO JOIN ZOOM EVENTS**

For the majority of our zoom meetings, the instructions for joining on zoom are the same. See below for instructions, and contact Pastor Christie with questions or difficulties. In the occasional case that the zoom link is different, instructions will be noted with the event publicity.



**To join virtually Join via zoom on computer or smart phone:** <https://us02web.zoom.us/j/3178285949?pwd=YSs1QzNScVIMZzlkMkZpMTImVINLUT09>

**Call in via telephone:** 1-301-715-8592

**Meeting ID:** 317 828 5949

**Passcode:** 4695

### **HOPE'S NURSERY IS OPEN**

Don't forget that **Kayla Terbrueggen** is available during worship to care for Hope's youngest children if parents wish to take advantage of her services. It is a safe place with toys and activity.



### **HUMOR FOR YOU**

I had been teaching my three-year old daughter, Caitlin, the Lord's Prayer for several evenings at bedtime, she would repeat after me the lines from the prayer. Finally, she decided to go solo. I listened with pride as she carefully enunciated each word right up to the end of the prayer: "Lead us not into temptation," she prayed, "but deliver us some E-mail. Amen."



**From All Creatures.org**

**REMEMBER TO CHECK OUT THE LIST OF RECYCLED ITEMS ON PAGE 6 THAT ARE MAY BE PLACED IN THE MANY DRAWERS IN THE NARTHEX/ LOBBY TO HELP OUR SAVE OUR ENVIRONMENT.**

**SON MINISTRIES' HAS A BIN THERE ALSO FOR FOOD AND PERSONAL CARE DONATIONS.**

## HOPE DIRECTORY APP

FOR YOUR COMPUTER OR PHONE

Directions are on the church counter or check for Instant Church Directory.



*\*Changes are continuously made. New pictures are requested. If you have changed your email address, you will need to re-enroll. It will not recognize the new email address for confidentiality purposes.*

Please contact Jerry Ivins for any changes.

## KROGER REWARDS PROGRAM

1. Visit [KrogerCommunityRewards.com](http://KrogerCommunityRewards.com)



2. Sign in to your online account, or create an account.

3. Find and select Hope Lutheran and click "Enroll."

Hope's 5 digit number is **80286**. Please join today!

## HOPE'S CONTRIBUTION INFORMATION

**To donate to Hope:** Checks may be mailed to **4695 Blue Rock Road, Cincinnati, OH 45247** or brought to church.

Digital donations may be submitted at [www.hopeonbluerock.org](http://www.hopeonbluerock.org) Click on "Giving" and then click on "Online Giving" and choose how you wish to donate - either by ChurchTrac or PayPal. For questions email Ron Long at [finance@hopeonbluerock.org](mailto:finance@hopeonbluerock.org)



## YELLOW BRICK ROAD CHILD CARE

We are proud of Kayla Willey's 2 Star award rating for her child care facility!



Need childcare? Call 513-601-2596 or send an email to the address below:

[yellowbrickroadchildcare@gmail.com](mailto:yellowbrickroadchildcare@gmail.com)

## PRAYER CHAIN INSTRUCTIONS

To submit a prayer chain request: Complete this online form <https://www.hopeonbluerock.org/prayer-requests/>, or send an email to [prayer@hopeonbluerock.org](mailto:prayer@hopeonbluerock.org), or call Pastor Christie 317-828-5949 (cell) 513-923-3370 (church office)



Interested in receiving prayer chain emails? Email [prayer@hopeonbluerock.org](mailto:prayer@hopeonbluerock.org) with your contact information and we will get you added to the list.

## DON'T FORGET OUR NARTHEX BINS!

-Used toothbrushes, empty toothpaste tubes and floss containers for UC Dental

-Food and personal care donations for SON Ministries

-Pop tabs for Ronald McDonald House

-Religious materials for Love Packages

-Pill bottles that are **Cleaned and without labels**

-Eye glasses for the Lyon's Club

-Clothing for Franciscan Sisters of the Poor



## FREESTORE FOODBANK HUNGER WALK

Monday, May 29, 9-12



The annual Hunger Walk for the Freestore Foodbank is scheduled for Memorial Day at Schmidlapp Lawn in downtown Cincinnati. The walk or 5K Run will begin at 9 a.m. For more information, if you wish to participate or donate, you may go to [www.cincinnatihungerwalk.org](http://www.cincinnatihungerwalk.org).

To register for SON Ministries, choose Carol's Army. Registration is \$25 with a shirt or \$20 without a shirt.

Come and spend your Memorial Day and walk, run, skip or stroll around the Ohio River.

## SMARTEST PEOPLE IN THE WORLD

A doctor, a lawyer, a little boy and a priest were out for a Sunday afternoon flight on a small private plane. Suddenly, the plane developed engine trouble. In spite of the best efforts of the pilot, the plane started to go down. Finally, the pilot grabbed a parachute, yelled to the passengers that they had better jump, and then he bailed out.



Unfortunately, there were only three parachutes remaining. The doctor grabbed one and said "I'm a doctor, I save lives, so I must live," and jumped out. The lawyer then said, "I'm a lawyer and lawyers are the smartest people in the world. I deserve to live." He also grabbed a parachute and jumped.

The priest looked at the little boy and said, "My son, I've lived a long and full life. You are young and have your whole life ahead of you. Take the last parachute and live in peace." The little boy handed the parachute back to the priest and said, "Not to worry, Father. The 'smartest man in the world' just took off with my back pack."

From Gateway to Jesus Ministries

## HOPE'S BOTTOM LINE

March 2023



### General Fund

Total	MONTH	YTD
Beginning Balance	\$ 46,938.97	\$ 22,843.59
Revenues	\$ 12,536.13	\$ 74,214.20
Expenses	\$ 20,242.30	\$ 57,924.99
Transfers In	\$ 22.00	\$ 122.00
Transfers Out	\$ 0.00	\$ 0.00
Ending Balance	\$ 39,254.80	\$ 39,254.80

### Memorial Fund

Beginning Balance	\$10,058.02	\$10,057.86
Transfers In	\$ 0.00	\$ 0.00
Interest Income	\$ .09	\$ .25
Transfers Out	\$ 0.00	\$ 0.00
Total	\$10,058.11	\$10,058.11

### Wilma Hoffman Fund

Beginning Balance	\$ 17,699.66	\$17,696.79
Deposit	\$ 0.00	\$ 0.00
Interest Income	\$ 1.51	\$ 4.38
Disbursements	\$ 0.00	\$ 0.00
Ending Balance	\$ 17,701.17	\$17,701.17

### Mission Building Fund

Beginning Balance	\$ 14,390.88	\$ 14,388.56
Revenue	\$ 0.00	\$ 0.00
Interest Income	\$ 1.22	\$ 3.54
Disbursements	\$ 0.00	\$ 0.00
Ending Balance	\$ 14,392.10	\$ 14,392.10

### Capital One CD

Beginning Balance	\$ 53,281.87	\$ 53,111.79
Deposit	\$ 0.00	\$ 0.00
Interest Income	\$ 76.99	\$ 247.07
Disbursements	\$ 0.00	\$ 0.00
Ending Balance	\$ 53,358.86	\$ 53,358.86

Chris Arany, Treasurer

## COUNCIL HIGHLIGHTS

March 9, 2023



◆**Pastor Christie:** Lenten and Easter services were well attended and beautiful. She has been very busy this month.

◆She is seeking 2 delegates to attend Synod Assembly on June 3 with her.

◆**Sue Millard, President:** The May meeting will be in person at Hope, and the council will write cards to send our shut-ins in addition to the meeting.

◆The council then reviewed another portion of Hope's bylaws.

◆**Chris Arany, Treasurer:** Donations for special projects will be listed under miscellaneous on his reports.

◆**Carmen Hasdorff, Interim Spiritual Life:** A Prayer

Chain Brunch is scheduled for May 6th at Hope at 10 am.

◆**Joy Ivins, Worship:** Easter attendance was 126.

◆There is an Outdoor Worship Service scheduled for July 16 at Hope. The committee's next meeting is May 17.

◆**Karen Schweinfest, Fellowship:** The committee sponsored the Easter Breakfast and Egg Hunt.

◆The Fellowship Committee will organize a potluck lunch after the Outdoor Worship on July 16.

◆**Erica Leppert, Christian Education:** The order for ELCA farm animals was placed.

◆The children presented a drama on Palm Sunday and made the mosaic crosses that decorated the Easter Breakfast tables.

◆**Becky Lister/Linda McBride, Outreach:** On April 24 a group is taking a hot lunch to the Esther Marie Hatton Center for Women in downtown Cincinnati with other donations.

◆There is a luncheon scheduled for May 7 for anyone who would like to learn more about Hope and its programs especially for potential members.

◆May 18 after Bible Study marks the beginning of visits to Liberty Nursing Home. They will be on the 3rd Thursday of each month. All are welcome to come

◆The next meeting is May 11, 2023.

*From the minutes of Debbie Schrader, Council Secretary*

**ARTICLES FOR THE JUNE ISSUE OF THE HOPE HERALD ARE REQUESTED BY SUNDAY, MAY 21TH. ARTICLES MAY BE EMAILED TO [joyceivins@icloud.com](mailto:joyceivins@icloud.com) or anytime before that date.**

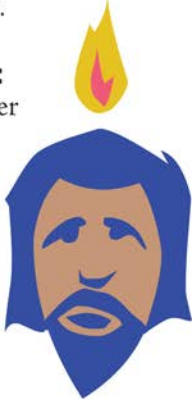


# Spirit SPINNER

For Pentecost, make a thaumatrope, a spinning toy that creates an optical illusion of motion.

## What you need:

- White paper
- Cup
- Scissors
- Pencil and markers
- Plastic drinking straw
- Glue



## What you do:

1. Using the cup's circular shape, trace two identical circles on the paper. Carefully cut them out.
2. In pencil, draw a person's head on one circle. Then place the blank circle on top and use the image beneath to guide you in drawing a flame above the head.
3. Color the two images with markers.
4. Apply glue to the backs of the circles and sandwich the top of the straw between them so it looks like a lollipop. Let dry.
5. Roll the straw quickly between your hands to view a mini motion picture.



# Wind, fire & spirit

Acts 2 describes the amazing events of Pentecost, when the apostles received the Holy Spirit.

*Directions: The last letter(s) of each word is the beginning letter of the next. Fill in the missing words to complete Acts 2:1-4, NIV.*

- |                   |           |
|-------------------|-----------|
| 1. HEAV           | 6. OGETHE |
| 2. ABLE           | 7. ES     |
| 3. AY OF PENTECOS | 8. ONGUE  |
| 4. ONGUE          | 9. A      |
| 5. PIRI           | 10. IND   |



“When the \_\_\_\_\_<sup>3</sup> came, they were all \_\_\_\_\_<sup>6</sup> in one place. Suddenly a sound like the blowing of a violent \_\_\_\_\_<sup>10</sup> came from \_\_\_\_\_<sup>1</sup> and filled the whole house where they were sitting. They \_\_\_\_\_<sup>9</sup> what seemed to be \_\_\_\_\_<sup>4</sup> of fire that separated and came to \_\_\_\_\_<sup>7</sup> on each of them. All of them were filled with the Holy \_\_\_\_\_<sup>5</sup> and began to speak in other \_\_\_\_\_<sup>8</sup> as the Spirit \_\_\_\_\_<sup>2</sup> them.”

**ACTS 2:1-4, NIV**

Answer: 1. heaven, 2. enabled, 3. day of Pentecost, 4. tongues, 5. Spirit, 6. together, 7. rest, 8. tongues, 9. saw, 10. wind





# May 2023

April 2023							May 2023							June 2023							
S	M	T	W	T	F	S	S	M	T	W	T	F	S	S	M	T	W	T	F	S	
						1	1	2	3	4	5	6							1	2	3
2	3	4	5	6	7	8	7	8	9	10	11	12	13	4	5	6	7	8	9	10	
9	10	11	12	13	14	15	14	15	16	17	18	19	20	11	12	13	14	15	16	17	
16	17	18	19	20	21	22	21	22	23	24	25	26	27	18	19	20	21	22	23	24	
23	24	25	26	27	28	29	28	29	30	31	25	26	27	28	29	30					
30																					

- Siri Suggestions
- Hope Calendar

Sunday	Monday	Tuesday	Wednesday	Thursday	Friday	Saturday
<p>30</p> <ul style="list-style-type: none"> <li>10:00 AM Worship: In-Person &amp; Livestream</li> <li>11:00 AM Confirmation Class</li> </ul>	<p>1</p> <ul style="list-style-type: none"> <li>10:00 AM SON @ GUMC</li> <li>5:00 PM Pastor's Office hours</li> <li>6:00 PM Praise Band</li> </ul>	<p>2</p> <ul style="list-style-type: none"> <li>10:00 AM Pastor's Office Hours</li> </ul>	<p>3</p> <ul style="list-style-type: none"> <li>10:00 AM Pastor's Office Hours</li> <li>10:00 AM SON @ GUMC</li> <li>4:30 PM SON @ GUMC</li> </ul>	<p>4</p> <ul style="list-style-type: none"> <li>National Day of Prayer</li> <li>10:00 AM Pastor's Office Hours</li> <li>1:00 PM Bible Study (virtual &amp; in-person)</li> <li>6:30 PM Digital Ministry</li> </ul>	<p>5</p> <ul style="list-style-type: none"> <li>Pastor's Day Off</li> </ul>	<p>6</p> <ul style="list-style-type: none"> <li>10:00 AM Prayer Chain Brunch</li> </ul>
<p>7</p> <ul style="list-style-type: none"> <li>10:00 AM Worship: In-Person &amp; Livestream</li> <li>11:00 AM Learn More About Hope Luncheon</li> </ul>	<p>8</p> <ul style="list-style-type: none"> <li>10:00 AM SON @ GUMC</li> <li>5:00 PM Pastor's Office hours</li> <li>6:00 PM Praise Band</li> </ul>	<p>9</p> <ul style="list-style-type: none"> <li>10:00 AM Pastor's Office Hours</li> </ul>	<p>10</p> <ul style="list-style-type: none"> <li>10:00 AM Pastor's Office Hours</li> <li>10:00 AM SON @ GUMC</li> <li>4:30 PM SON @ GUMC</li> </ul>	<p>11</p> <ul style="list-style-type: none"> <li>1:00 PM Bible Study (virtual &amp; in-person)</li> <li>7:00 PM Council Meeting Zoom</li> </ul>	<p>12</p> <ul style="list-style-type: none"> <li>Pastor's Day Off</li> </ul>	<p>13</p>
<p>14</p> <ul style="list-style-type: none"> <li>10:00 AM Worship: In-Person &amp; Livestream</li> </ul>	<p>15</p> <ul style="list-style-type: none"> <li>10:00 AM SON @ GUMC</li> <li>5:00 PM Pastor's Office hours</li> <li>6:00 PM Praise Band</li> </ul>	<p>16</p> <ul style="list-style-type: none"> <li>10:00 AM Pastor's Office Hours</li> </ul>	<p>17</p> <ul style="list-style-type: none"> <li>10:00 AM Pastor's Office Hours</li> <li>10:00 AM SON @ GUMC</li> <li>4:00 PM Worship Committee</li> <li>4:30 PM SON @ GUMC</li> </ul>	<p>18</p> <ul style="list-style-type: none"> <li>10:00 AM Pastor's Office Hours</li> <li>1:00 PM Bible Study (virtual &amp; in-person)</li> <li>2:00 PM Bible Study @ Liberty Nursing Home</li> <li>6:30 PM Generosity Committee</li> </ul>	<p>19</p> <ul style="list-style-type: none"> <li>Pastor's Day Off</li> </ul>	<p>20</p>
<p>21</p> <ul style="list-style-type: none"> <li>10:00 AM Worship: In-Person &amp; Livestream</li> </ul>	<p>22</p> <ul style="list-style-type: none"> <li>10:00 AM SON @ GUMC</li> <li>5:00 PM Pastor's Office hours</li> <li>6:00 PM Praise Band</li> </ul>	<p>23</p> <ul style="list-style-type: none"> <li>10:00 AM Pastor's Office Hours</li> </ul>	<p>24</p> <ul style="list-style-type: none"> <li>10:00 AM Pastor's Office Hours</li> <li>10:00 AM SON @ GUMC</li> <li>4:30 PM SON @ GUMC</li> </ul>	<p>25</p> <ul style="list-style-type: none"> <li>10:00 AM Pastor's Office Hours</li> <li>1:00 PM Bible Study (virtual &amp; in-person)</li> <li>6:00 PM WHOO Women</li> </ul>	<p>26</p> <ul style="list-style-type: none"> <li>Pastor's Day Off</li> </ul>	<p>27</p>
<p>28</p> <ul style="list-style-type: none"> <li>10:00 AM Worship: In-Person &amp; Livestream</li> <li>11:30 AM HOLD Bridal Shower -fellowship hall</li> </ul>	<p>29</p> <ul style="list-style-type: none"> <li>SON Ministries closed</li> <li>5:00 PM Pastor's Office hours</li> <li>6:00 PM Praise Band</li> </ul>	<p>30</p> <ul style="list-style-type: none"> <li>10:00 AM Pastor's Office Hours</li> </ul>	<p>31</p> <ul style="list-style-type: none"> <li>10:00 AM Pastor's Office Hours</li> <li>10:00 AM SON @ GUMC</li> <li>4:30 PM SON @ GUMC</li> </ul>	<p>1</p> <ul style="list-style-type: none"> <li>10:00 AM Pastor's Office Hours</li> <li>1:00 PM Bible Study (virtual &amp; in-person)</li> </ul>	<p>2</p> <ul style="list-style-type: none"> <li>Pastor's Day Off</li> </ul>	<p>3</p>

---

**The Hope Herald**  
Hope Lutheran Church  
Pastor Christie Beckmann  
4695 Blue Rock Road  
Cincinnati, Ohio 45247-3571  
513-923-3370  
[office@hopeonbluerock.org](mailto:office@hopeonbluerock.org)  
[www.hopeonbluerock.org](http://www.hopeonbluerock.org)



### OUR MISSION

We are anchored in faith and saved by God's grace. Led by the Holy Spirit, it is our purpose to invite all to know hope, love, and peace through Jesus Christ.



Pastor:	Christie Beckmann
Choir Director:	Karen Schweinfest
Organist:	Dale Renner
Altar Care:	Ruth Oehler
Prayer Chain:	Carmen Hasdorff
Web Site:	Pastor Christie Jerry Ivins
Facebook:	Mary Bryant
Kitchen Manager:	Karen Schneider

### HOPE HERALD STAFF:

Worship Assistants:	Nan Davis Jerry Ivins Ruth Oehler Joy Ivins
Editor:	Joy Ivins
Clip Art:	Jerry Ivins



Micah 6:8, NRSV

---